



#WearYourPearls



#PearlsofWisdom

Northeastern University
 Bouvé College of Health Sciences
 School of Nursing, School Health Academy

Contact hours provided by Northeastern University School of Nursing, accredited provider of nursing continuing professional development by ANCC's Commission on Accreditation. Full participation in the conference and completion of an online evaluation are required to obtain contact hours.

Sponsorship opportunities available!



Register TODAY by clicking [this link!](#) Early bird ends 2/15/25!

EARN UP TO 7 CEU'S! Click [HERE](#) for all of our speakers!



Abigail Walsh
 DNP, CPNP-AC
 Abdominal Assessment: When it's more than just a stomach ache



Robin Cogan
 MEd, RN, NCSN, FNASN, FAAN
 School Nurses are Chief Wellness Officers



David Nash
 Esquire
 What's Changed and What Hasn't: Understanding Evolving Legal Requirements in School Health



Terri Hinkley
 EdD, MBA, BScN, RN, CAE
 School Nursing Evolved: NASN's Refreshed School Nursing Practice Framework™



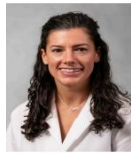
Sanford Starr
 Assistant Commissioner
 Addressing Student Mental Health and Wellness: New Jersey Statewide Student Support Services



Sheila Caldwell
 BSN, RN, CSN, CCHC, FNASN
 School Nurses! What You Need-to-Know About NJ Preschool Expansions!



Ashley Colnett
 RN, CDCES, CSN
 Insulin Pumps & CGMs: Best Practices for School Nurses & Type One Diabetes



Christina Herrero
 Pediatric Orthopedic Surgeon, MD
 The Cerebral Palsy Patients
 Musculoskeletal Exam: How to perform, what not to miss, and who to refer out to and when



Gabriella True
 Board President of ASPIRE
 PANS PANDAS - Symptoms and Solutions in the School Setting for School Nurses