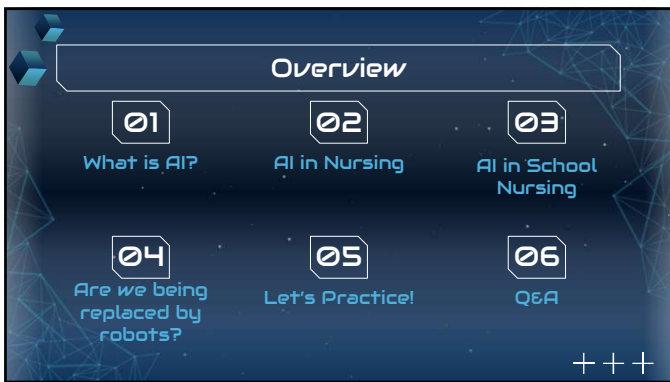




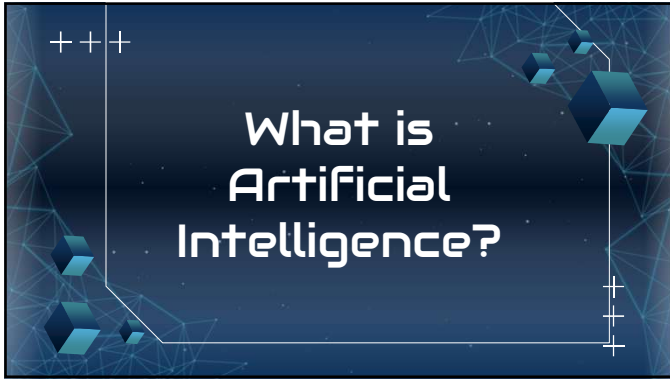
1



2



3



4




5



6

Artificial Intelligence



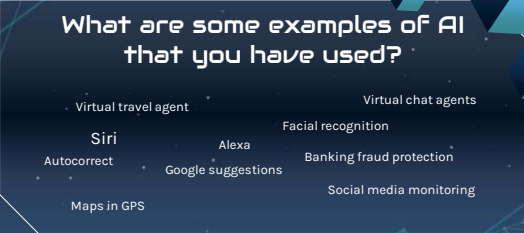
What is AI?

Artificial intelligence is technology that learns human functions such as language and processes and makes predictions faster and in a way that normally would require human thinking

It can understand and translate human language. It can analyze large amounts of data, make predictions and recommendations.

7

What are some examples of AI that you have used?



- Virtual travel agent
- Siri
- Autocorrect
- Maps in GPS
- Alexa
- Google suggestions
- Facial recognition
- Banking fraud protection
- Social media monitoring
- Virtual chat agents

8

It is predicted that artificial intelligence will transform nursing across all domains of nursing practice, including administration, clinical care, education, policy, and research.

<https://pmc.ncbi.nlm.nih.gov/articles/PMC8328269/>

9

AI in Nursing

ANA Statement

AI and nursing practice...have the potential to support equitable and universal access to health services, increase the efficiency and reliability of health systems, improve patient and health worker safety, respond to health workforce shortages, reduce costs and, ultimately, improve people's health outcomes."

1 Yesterday

- Paper charts
- Phones with cords
- Verbal report
- PA system
- Labs printed
- Text books?
- pharmacology books

2 Today

- Generate care plans
- Mechanical tasks i.e. feedings
- Fetching medications
- Health predictions based on data
- Prevention generated interventions
- =Increase time with patients

3 Tomorrow

- Enhance:
- Opportunity
- Equity
- Access
- In addition to NOT a replacement

10

Are we being replaced by robots?

11

Nursing as a Profession

Trust

We are the most trusted profession for over 20 years. This comes from human behavior.

Nursing Process

Assess, interventions, plan, evaluate

Hands on

Caring, empathy, compassion, culturally responsive, listening, sympathy

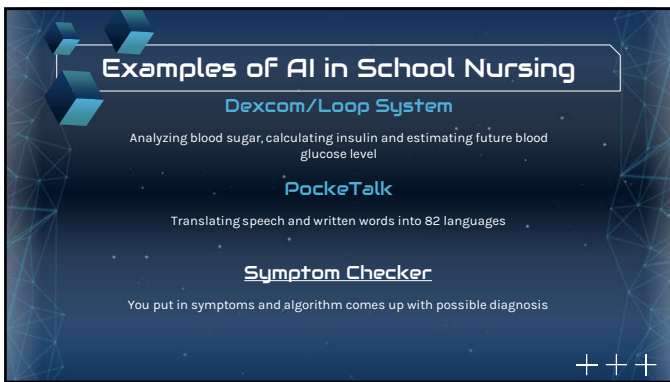
Philosophy

Values, beliefs, personal and professional ethics as they relate to the nursing profession and their motivation for being a nurse

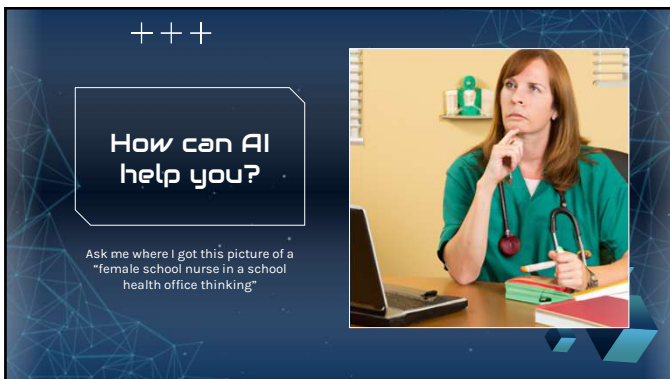
12



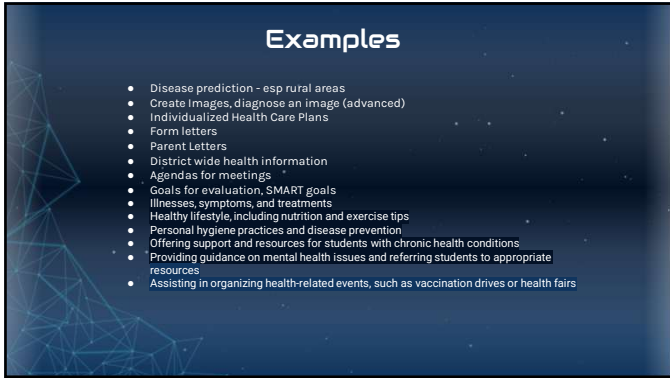
13



14



15



16



17



18


Other AI Platforms

- Chat GPT
- Microsoft Copilot
- Claude
- Meta AI
- Perplexity

19

Perplexity.AI

Use AI to summarize a research article

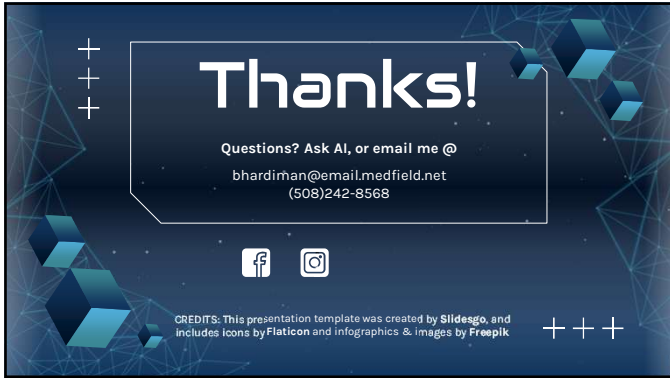


20

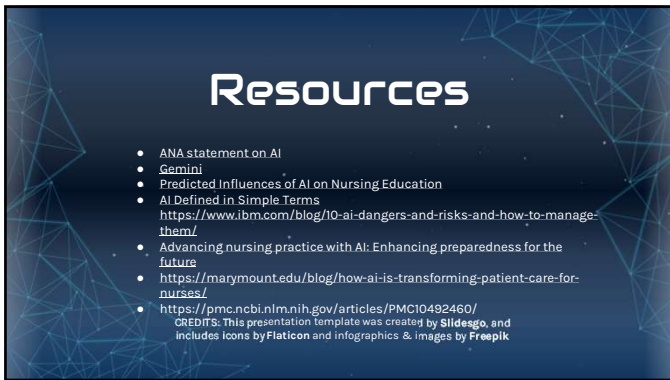
Considerations

- Look out for ethical considerations and bias
- Assist the school nurse with the nursing process and interventions
- Ensure that AI does not compromise human RELATIONSHIPS, central to our profession
- AI is in addition to, not a replacement for
- Remember confidentiality
- Create, maintain or enhance, but not diminish
- Fact check!

21



22



23



24
